

global.anato.cl
CODE: 5cHgt00002

**VARIATIONS IN NUMBER
OF BRANCHES OF
AORTIC ARCH IN
COLOMBIAN FETUS.
REPLETION WITH
POLYESTER RESIN**

Author: Jose Darío Rojas Oviedo MD MSc. (C). darojaso@gmail.com

Institution: Universidad Industrial De Santander. Colombia.
www.uis.edu.co

Year: 2009

Language: English

BRANCHES ARISE OF THE AORTIC ARCH IN HUMAN FETUS. A DESCRIPTIVE DIRECT STUDY IN COLOMBIAN POPULATION

Paper in review process by the International Journal of Morphology.

Received in may 4th of 2009

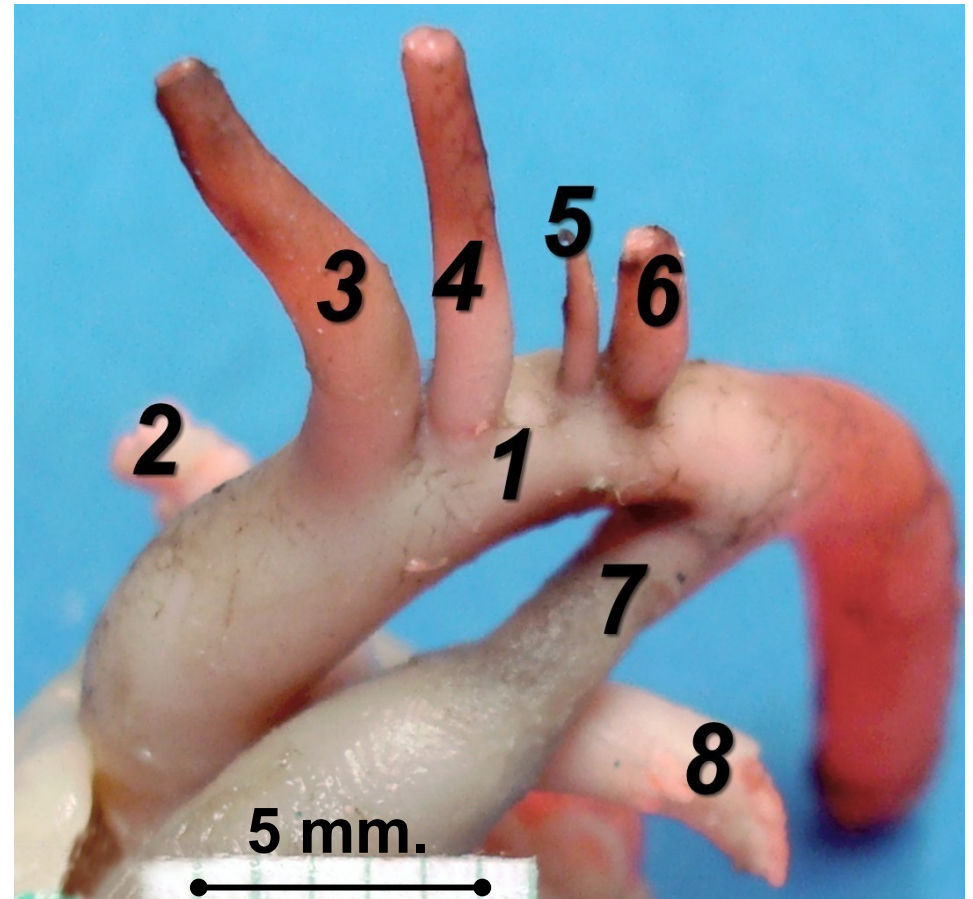
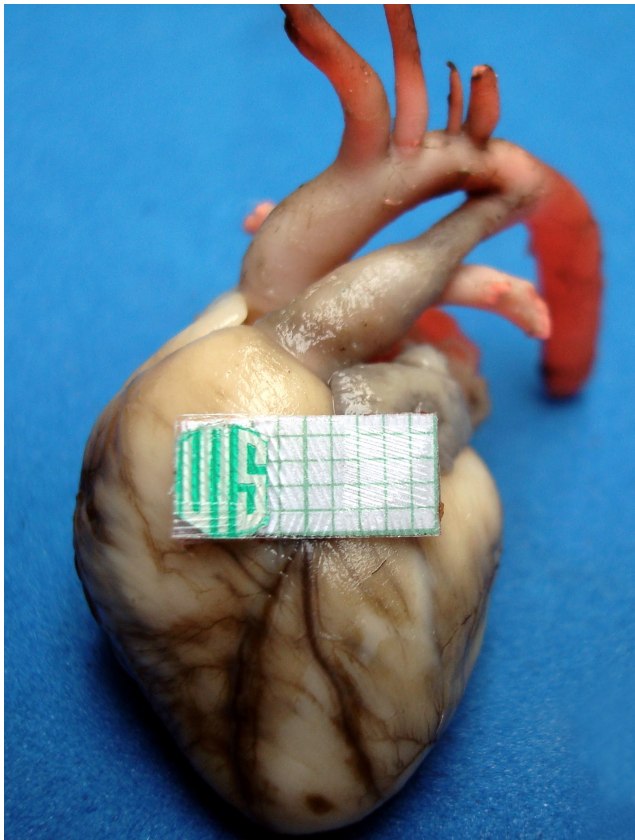
- The present study was performed in 51 hearts of human fetus.
- In 8 cases (15.7%) was founded a variation of aortic arch with 4 branches.
- Previous report of aortic arch with 4 branches showed 11 % of that variation in a group of 100 adults human hearts *
- This is the first report of variations in number of branches of aortic arch in human fetus.

* Gupta M, Sodhi L. Variations in branching pattern, shape, size and relative distances of arteries arising from arch of aorta. Nepal Med Coll J. 2005 Jun; 7(1):13 – 7

global.anato.cl

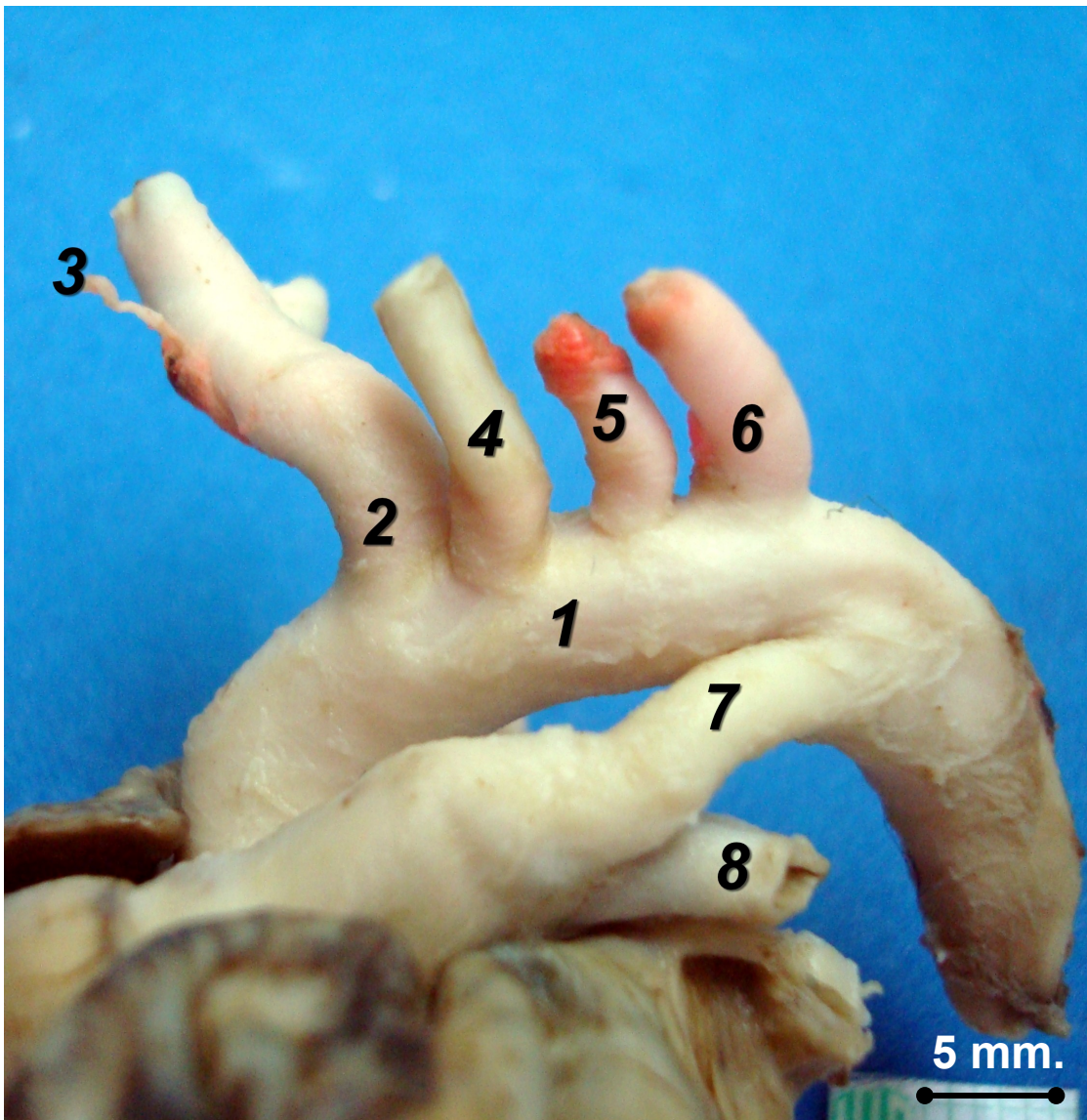
CODE: 5cHgt00002

**Female, 23 weeks
gestational age. Aortic
arch with 4 branches**



1. Aortic arch.
2. Right Pulmonary Artery
3. Brachiocephalic trunk.
4. Left Common Carotid Artery
5. Left Vertebral Artery
6. Left Subclavian Artery
7. Ductus Arteriosus
8. Left Pulmonary Artery

**Male, 38 weeks gestational age. Aortic arch with 4
branches**

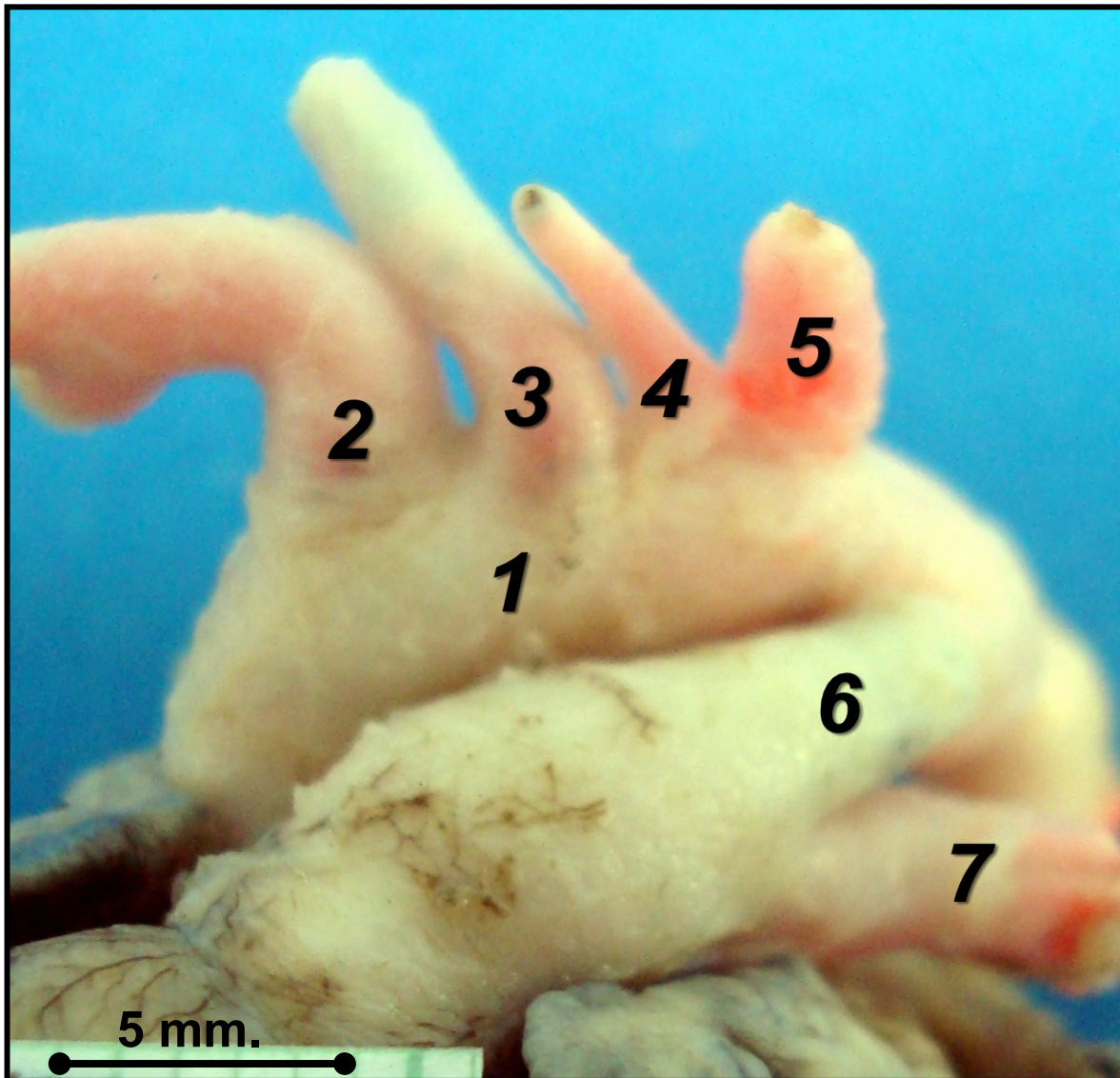


1. Aortic arch.
2. Brachiocephalic trunk.
3. Thyroid Ima Artery
4. Left Commun Carotid Artery
5. Left Vertebral Artery
6. Left Subclavian Artery
7. Ductus Arteriosus
8. Left Pulmonary Artery

global.anato.cl

CODE: 5cHgt00002

**Female, 40 weeks gestational age. Aortic arch with
4 branches**



1. Aortic arch.
2. Brachiocephalic trunk.
3. Left Common Carotid Artery
4. Left Vertebral Artery
5. Left Subclavian Artery
6. Ductus Arteriosus
7. Left Pulmonary Artery