

global.anato.cl  
CODE: 6pAgm100004

## **Lateral View of the Thoracic Wall of the Goat**

Author: Kathryn Hooper and Haley Stark

Institution: Oregon State University/ Corvallis, OR, United States of America

Language: English

April 2009

Serratus ventralis cervicis m.

Brachial plexus

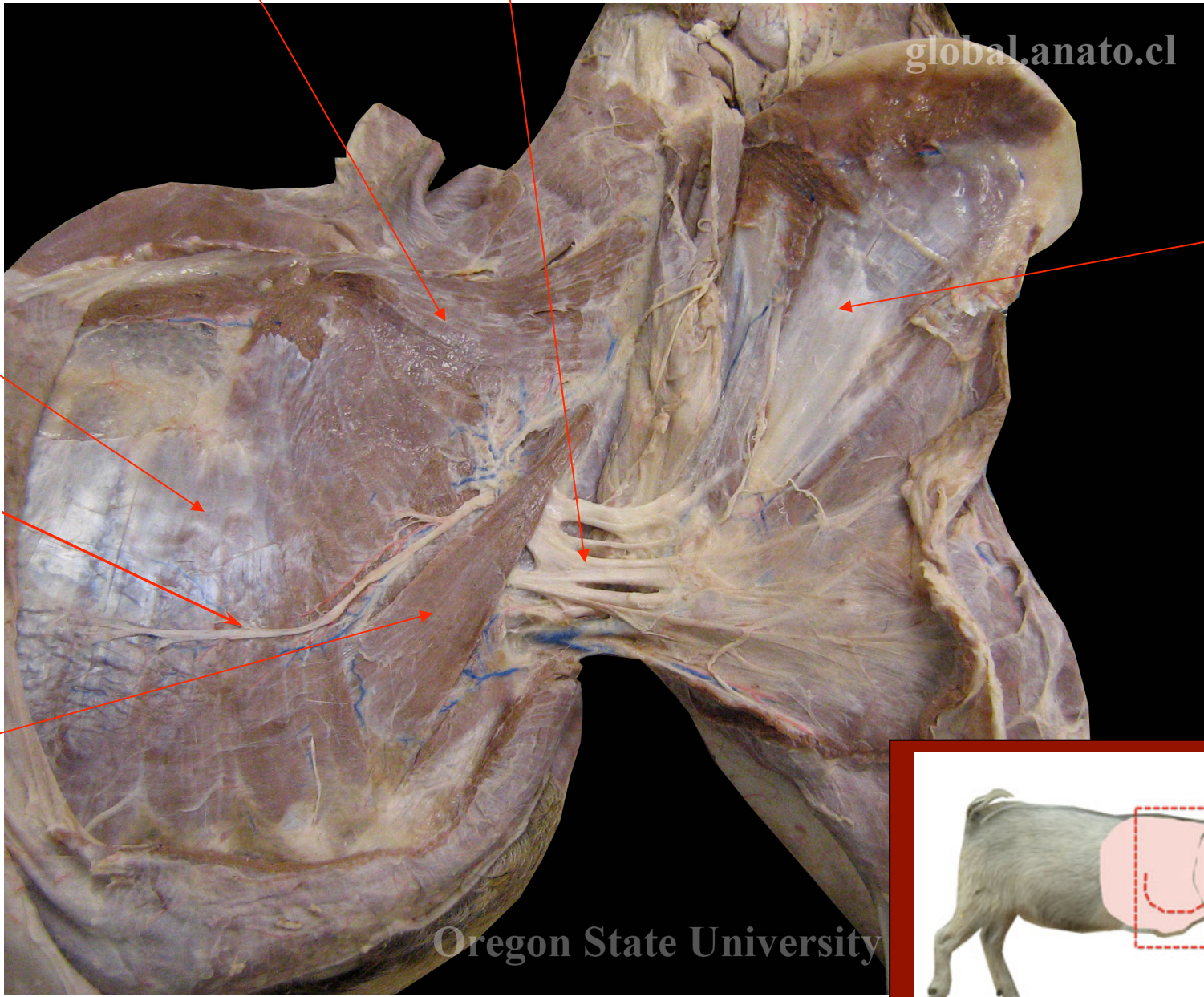
global.anato.cl

Subscapularis m.

Serratus ventralis thoracis m.

Long thoracic n.

Scalenus m.



Oregon State University

